

Your Trip to **JAPAN**

ITINERARY

Art * Nature * Culture * Peace
March 23-April 2, 2026
by Island Jane Journeys & Latitude and Grace

Islandjanejourneys.com

Latitudeandgrace.com

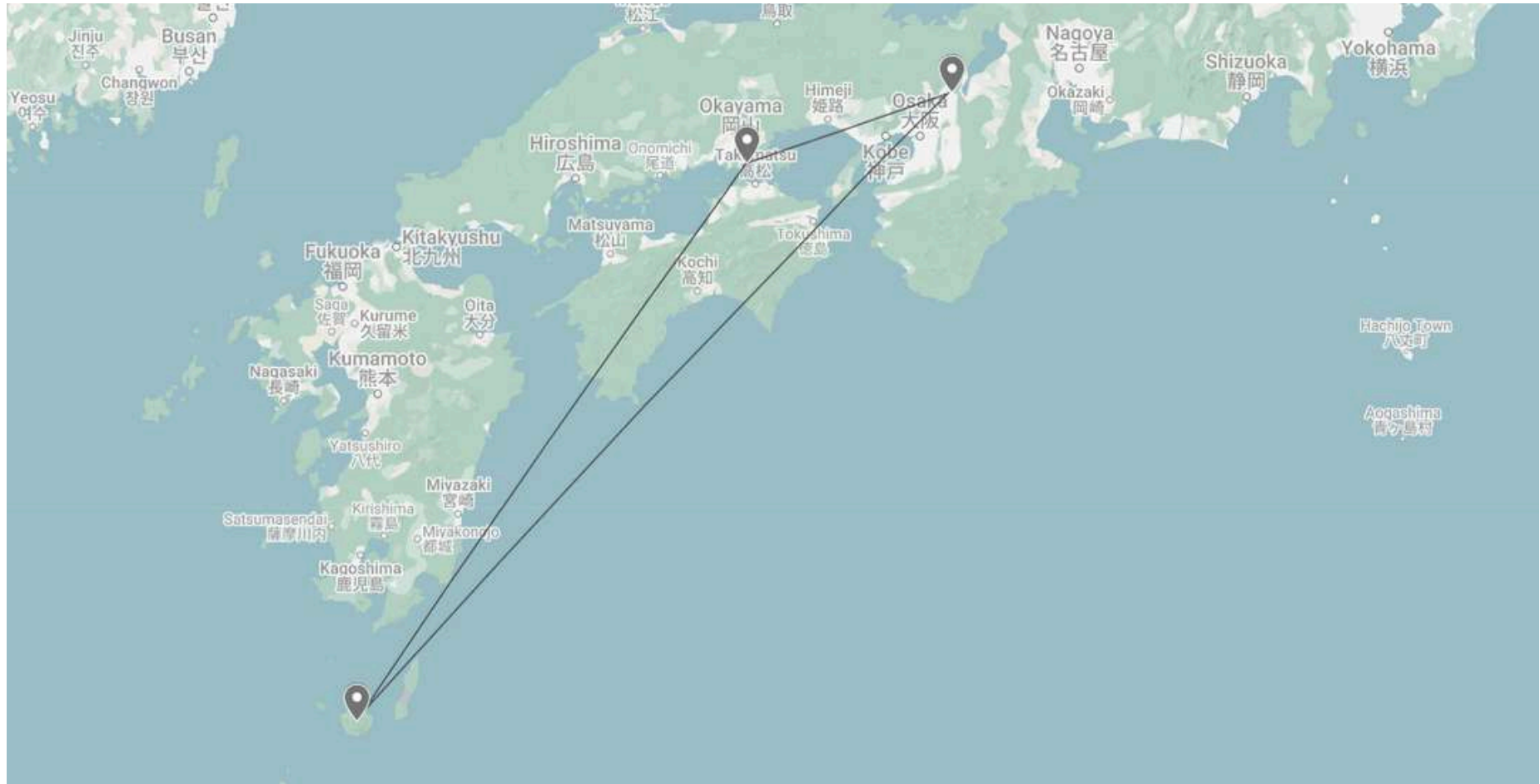
JANE HOWARD - ISLAND JANE JOURNEYS 206-769-6291 INFO@ISLANDJANEJOURNEYS.COM
MARCIA ROBINSON - LATITUDE AND GRACE 509-824-5028 INFO@LATITUDEANDGRACE.COM



JAPAN

An 11-Day
Journey of
Culture,
Beauty, and
Discovery

Trip ROUTE





DAY 1 MON 23 MAR

☐ Kyoto

- Transfer from Osaka (KIX) airport to the hotel in Kyoto
- Walk to welcome dinner
 - Japanese meal

DAY 2 TUE 24 MAR

☐ Kyoto

- Kiyomizu-Dera temple
- Pottery making Experience
- Nishiki Market
- Fushimi Inari
- Free afternoon

DAY 3 WED 25 MAR

☐ Kyoto

- Nazenji Temple
- Kinjakuji - Golden Pavillion
- Ryoanji - Rock Garden
- Gion district
- Tea Ceremony With Kimono

DAY 4 THU 26 MAR

☐ Kyoto

- At Leisure
- Optional
 - Karakami Stampbook making experience
 - Calligraphy class
 - Nara side-trip

DAY 5 FRI 27 MAR

☐ Kyoto - Yakushima

- Flight From Itami Airport to Yakushima Airport
- Woodcrafting workshop
- Cooking class

DAY 6 SAT 28 MAR

☐ Yakushima

- Island tour with local walks, forest bathing
- Isso beach sand bathing
- Local night out
- Karaoke night



DAY 7 SUN 29 MAR

☐ Yakushima

- Immersion in Nature
- Yakusugi Museum
- Yakusugi Land -short hike
- Optional:
 - Onsen

DAY 8 MON 30 MAR

☐ Yakushima - Uno

Optional:

- Morning e-bike or kayaking

Lunch

Bullet train to Okayama

- Flight From Yakushima Airport to Itami Airport
- Transfer to Uno Port Hotel
- Dinner at hotel

DAY 9 TUE 31 MAR

☐ Naoshima

Ferry to Naoshima

- Chichu Art Museum
- Benesse House Museum
- Yellow Pumpkin
- Miyanoura Port area

Ferry back to Uno port

- Dinner at hotel

DAY 10 WED 1 APR

☐ Okayama - Kyoto

Transfer to Okayama

- Okayama Castle and Korakuen gardens
- Japanese Lunch

Bullet train to Kyoto

- Miyako Odori show
- Farewell Dinner

DAY 11 THU 2 APR

☐ Departure

- Transfer for Kansai International Airport

Day 1

WELCOME TO JAPAN

Cherry Blossom Season invites you to a soul-stirring journey through Japan—a celebration of art, heritage, nature, and reflection

From the timeless charm of Kyoto to the ancient forests of Yakushima, this experience is not just about travel—It's about immersion, awakening, and grace.

Let's step into the beauty that awaits. Settle in, and enjoy a welcome dinner.

✨ A gentle beginning to a journey of depth and discovery.



ACCOMMODATION

- Kyoto Takasegawa Villa

TRANSPORTATION

Transfer-Osaka's Kansai airport to Kyoto Takasegawa Villa

GUIDE

- Half day

ACTIVITIES & ENTRANCES

- Welcome dinner and introductions

Day 2 KYOTO

Begin your day at Kiyomizudera Temple, famed for its dramatic hillside wooden stage that seems to float in the sky.

Next, take part in a hands-on pottery session in one of Kyoto's most storied neighborhoods.

Wander through Nishiki Market and enjoy lunch at your own pace, sampling local specialties.

Will you make it to the top of Fushimi Inari's iconic torii path?

🌀 Step into the rhythm of tradition.



ACCOMMODATION

- Kyoto Takasegawa Villa

TRANSPORTATION

- Private micro - bus for day tour

MEALS

- Breakfast

GUIDE

- 6 hours

ACTIVITIES & ENTRANCES

- Kiyomizu-Dera temple, Kintsugi making experience, Fushimi-Inari

Day 3 KYOTO

Today is a Zen day. Visit the Nazenji Temple. This serene complex features an elegant 19th-century aqueduct still in use today.

From here, we will head to the Golden Pavilion and Ryoanji (famous for its dry garden).

Conclude the day with a traditional tea ceremony in Gion, wearing the kimono of your choice—a graceful and immersive cultural experience.

🍵 A day of stillness, elegance, and mindful presence.



ACCOMMODATION

- Kyoto Takasegawa Villa

TRANSPORTATION

- Private micro - bus for day tour

MEALS

- Breakfast

GUIDE

- Full day

ACTIVITIES & ENTRANCES

- Nazenji Temple, Kinjakuji - Golden Pavillion, Ryoanji - Rock Garden, Tea Ceremony with Kimono

Day 4 KYOTO

Enjoy Kyoto at your own rhythm today.

Why not take a day trip to Nara and meet the wild deer roaming around the UNESCO World Heritage site?

Optional Activities

- *Karakami Printing - Karakami Stampbook Making*
 - *Explore Karakami woodblock printing by crafting your own custom stampbook with traditional patterns passed down from ancient times*
- *Calligraphy class*
 - *Try your hand at Japanese calligraphy, learning brush techniques and character strokes.*

 *A day of stillness, elegance, and mindful presence.*



ACCOMMODATION

- Kyoto Takasegawa Villa

TRANSPORTATION

- On your own

MEALS

- Breakfast

GUIDE

- Optional activities or visit to nearby Nara

ACTIVITIES & ENTRANCES

- On your own

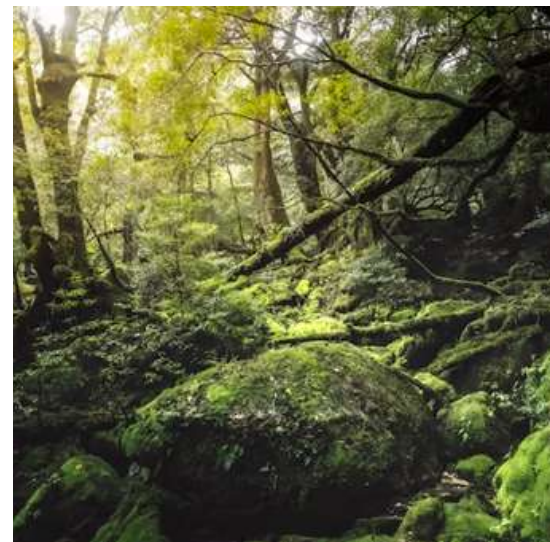
Day 5

KYOTO TO YAKUSHIMA

Escape to Yakushima, a pristine island sanctuary known for its ancient cedar forests and abundant wildlife.

Step back in time with Native Woods Gallery and Workshop.

🌸 A day to reflect, wander, or express your inner artist.



ACCOMMODATION

- Group Homestays

TRANSPORTATION

- Mid-size bus to Itami airport, Plane tickets to Yakushima in economy class

MEALS

- Breakfast, Lunch, Dinner

GUIDE

- Airport Transfer support. meet Hiroko, our Island Guide

ACTIVITIES & ENTRANCES

- Native Woods Workshop and Gallery
- Mochi Making with Mugwort

Day 6

YAKUSHIMA

Reconnect with nature through forest bathing and sand bathing.

Experience warmth through a group homestay.

Savor the simplicity of island life during a hands-on cooking class.

🌲 Let the wild whisper you home.



ACCOMMODATION

- Group Homestay

TRANSPORTATION

- Mini Van

MEALS

- Breakfast, Lunch, Dinner

GUIDE DAY

- Local Guides

ACTIVITIES AND ENTRANCES

- Island explorations, waterfalls short hikes, beach, hot springs and more!

Day 7

YAKUSHIMA

Yakushima Haiku

Ancient trees whisper
Warm sand cradles weary feet
Turtles greet the dusk

Waterfalls cascade
Monkeys swing through green silence
The sea cradles life

Museum stillness
Stories carved in cedar hearts
Island breathes through mist

♥ Let peace cup your heart and hold it gently.



ACCOMMODATION

- Group Homestay

TRANSPORTATION DAY 5

- Mini Van

MEALS DAY 5

- Breakfast, Lunch

GUIDE DAY 5

- Local Guide

ACTIVITIES & ENTRANCES

- Yakusugi Museum, Sandbathing, Scenic Island Tour with drive-waterfalls, and walks, wild monkeys and turtle nesting sites.

Day 8 UNO

After a morning e-bike or kayak paddle, we will return to the mainland and unwind at your hotel by the sea in Uno.

Soak in the rejuvenating nearby hot springs of Tamanoyu before a cozy group dinner.

 Let the quiet pulse of the island linger in you.



ACCOMMODATION

- UNO Hotel

TRANSPORTATION

- Plane Ticket from Yakushima to Itami airport in economy class, Private mid-size bus transfer to Uno Port

MEALS

- Breakfast, Lunch, Dinner

GUIDE

- Half Day Island Guide and Half Day Mainland Guide

ACTIVITIES & ENTRANCES

- Morning Kayak or e-bike, flight to mainland, and evening onsen

Day 9

NAOSHIMA

Board the ferry to Naoshima, Japan's famed "Art Island".

Descend into the Chichu Art Museum, a subterranean sanctuary where light, space, and silence shape each encounter with art.

Continue to the Benesse House Museum, where architecture, nature, and contemporary art exist in quiet harmony along the sea.

Stroll through the charming Miyanoura Port, dotted with sculptures, cafés, and local charm.

🎨 A meeting of sea, sky, silence, and creativity.



ACCOMMODATION

- UNO port Hotel

TRANSPORTATION

- Roundtrip Ferry to Naoshima

MEALS

- Breakfast, dinner

GUIDE

- Full day

ACTIVITIES & ENTRANCES

- Chichu Art Museum, Benesse House Museum

Day 10

OKAYAMA - KYOTO

Explore the storied walls of Okayama Castle, a 16th century iconic landmark with a black exterior.

Stroll Korakuen, considered a living masterpiece. Enjoy a tranquil glimpse of Edo-period aesthetics

Be dazzled by Miyako Odori, a celebrated geisha performance in Gion.

Celebrate with a festive farewell dinner—reflecting on memories made and friendships formed.

🏠 A graceful finale to our Japanese journey.



ACCOMMODATION

- Kyoto Takasegawa Villa

TRANSPORTATION

- Private microbus to Okayama, Bullet train to Kyoto, Private microbus for day tour

MEALS

- Breakfast, lunch, dinner

GUIDE

- Full day

ACTIVITIES & ENTRANCES

- Okayama Castle and Korakuen Garden, Miyako Odori show,
- Farewell Dinner

Day 11

DEPARTURE DAY

This was not just about seeing Japan—it was about feeling it. Walking slowly. Savoring silence. Creating something by hand. Connecting with each other and with ourselves. This journey invited us to remember who we are—and who we're becoming.

Thank you for traveling with intention and grace. Depart with your heart full and spirit renewed.

禁 May the memories linger, and the journey continue within.



ACCOMMODATION

- none

TRANSPORTATION

- Mid size bus to Airport

MEALS

- Breakfast

GUIDE

- Airport transfer support

Trip INCLUSIONS

PRICE

\$5,599 USD PERSON

DEPOSIT \$1500*

DOUBLE OCCUPANCY

SINGLE PRICE

\$6,599 USD/PERSON

***REFUNDABLE ONLY IF A MINIMUM OF 8 GUESTS IS
NOT MET**

TICKETS AND ACTIVITIES

- Day 2: Kiyomizu-Dera temple, Kintsugi making Experience
- Day 3: Nazenji Temple, Kinjakuji - Golden Pavilion, Ryoanji - Rock Garden, Tea ceremony with Kimono
- Day 9: Chichu Art Museum
- Benesse House Museum
- Day 10: Okayama Castle and Korakuen garden, Miyako Odori show

ENGLISH SPEAKING GUIDE

- English-speaking guide every day except Day 4, 6, and 7.
- Travel designer support

TRANSPORTATION

- Private mid-size or microbus on the mentioned days.
- Round-trip ferry from Uno Port to Miyajima on day 9
- Bullet train from Okayama to Kyoto on Day 10
- Luggage Transfer from Uno to Kyoto on day 9

MEALS

- Breakfast everyday except day 6, 7, and 8
- Lunch on Day 10
- Dinner on Day 1, 8, 9 and 10

ACCOMMODATION

- Included for all 10 nights

NOT INCLUDED

- International flights
- Meals, transportation and activities not listed in the inclusions
- Personal expenses such as gifts and snacks
- Concierge service

Trip ACCOMMODATION INFORMATION

KYOTO TAKASEGAWA VILLA

KYOTO

<https://kyoto-takasegawabettei.com/en/>

ROOM INFORMATION

Twin Bed Room - Double occupancy (37,7 sqm)



UNO HOTEL

UNO

<https://uno-hotel.com/en/>

ROOM INFORMATION

Twin Bed Room - Double occupancy (26 sqm)



Pre Tour TOKYO-HAKONE

DAY 1 FRI 20 MAR

☐ Tokyo

Day tour with public transportation

- Ginza Architecture tour
- Lunch at leisure
- Free evening

DAY 2 SAT 21 MAR

☐ Tokyo

Day tour with public transportation

- Meiji Jingu Shrine
- Omotesando
- Nezu museum
- Aoyama
- 21/21 Design Sight

DAY 3 SUN 22 MAR

☐ Hakone

Day tour with public transportation

- Hakone Shrine
- Lake cruise
- Hakone ropeway
- Owakudani
- Dinner at hotel

DAY 4 MON 23 MAR

☐ Kyoto

Bullet train to Tokyo

- Meet the rest of the group

Pre-Trip INCLUSIONS

PRICE

\$1499/PERSON

Based on a group of 4 people - double

Single occupancy -
\$1999

NOT INCLUDED

- International flights
- Meals, transportation and activities not listed in the inclusions
- Personal expenses such as gifts and snacks
- Concierge service

TICKETS AND ACTIVITIES

- Day 2: Nezu Museum, 21/21 Design Sight
- Day 3: Lake cruise, Hakone ropeway,

ENGLISH SPEAKING GUIDE

- English-speaking guide every day.

ACCOMMODATION

- Included for all nights

TRANSPORTATION

- Pre-charged IC transportation card with 3,000 JPY
- Romance car from Shinjuku Station to Odawara Station on day 3
- Hakone 2-day pass
- Bullet train from Odawara Station to Kyoto Station on day 4

MEALS

- Breakfast everyday
- Lunch: None
- Dinner on Day 3

Pre-Trip

ACCOMMODATION INFORMATION



REMM ROPPONGI

TOKYO

<https://www.hankyu-hotel.com/en/hotel/remm/roppongi>

ROOM INFORMATION

Twin room - Double occupancy (24.4 sqm)

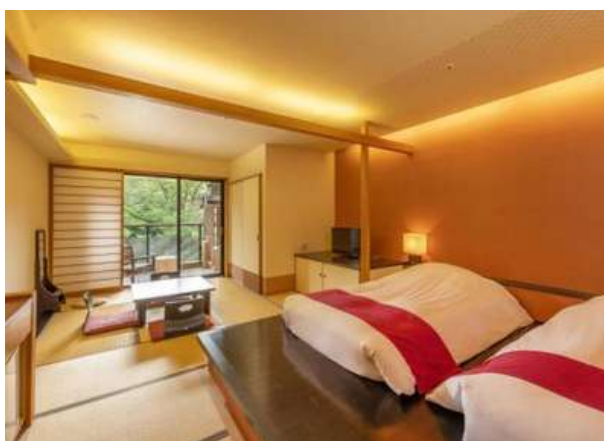
GORA ONSEN SETSUGETSUKA BETTEI SUIUN

HAKONE

<https://dormy-hotels.com/resort/hotels/suiun/>

ROOM INFORMATION

Twin Bed Room (38 sqm)



Post-tour

OP.1 - HIROSHIMA



DAY 1 TUE 2 APR

☐ Kyoto - Hiroshima

Make your way to Kyoto Sta

- Bullet train to Hiroshima

Day tour with public transport

- Hiroshima Castle
- A-bomb Dome
- Hiroshima Peace Park
- Hiroshima Peace Memorial Museum

DAY 2 SUN 3 APR

☐ Hiroshima - Osaka

Free day at the hotel

Make your way to Hiroshima Sta

- Bullet train to Osaka

Post-tour

OP.2 - HIROSHIMA + OKINAWA

DAY 1

THU
2 APR

☐ Kyoto - Hiroshima

Make your way to Kyoto Sta

- Bullet train to Hiroshima

Day tour with public transport

- Hiroshima Castle
- A-bomb Dome
- Hiroshima Peace Park
- Hiroshima Peace Memorial Museum

DAY 2

FRI
3 APR

☐ Hiroshima - Naha

Private Car to Hiroshima Airport

- Flight to Naha in Economy Class

Private car for half day tour

- Shuri castle
- Hotel Check in

DAY 3

SAT
4 APR

☐ Nago

Free day at the hotel

Enjoy the beach or explore at leisure.

DAY 4

SUN
5 APR

☐ Yomitan

Day tour with private car

- Zakimi Castle Ruins
- Cape Maeda
- Coral Dyeing Experience

DAY 5

MON
6 APR

☐ Naha

Day tour with private car

- Morning Market Tour and Cooking Class
- Okinawa Prefectural Museum & Art Museum
- Tsuboya Yachimun Pottery Street

DAY 6

TUE
7 APR

☐ Naha

Transfer to Naha International Airport with private car



Post-tour

OP.3 - OKINAWA

DAY 1 THU 2 APR

Kyoto



Day at leisure in Kyoto

DAY 2 FRI 3 APR

☐ Kyoto - Naha

Private Car to Itami Airport

- Flight to Naha in Economy Class

Private car for half day tour

- Shuri castle
- Hotel Check in

DAY 3 SAT 4 APR

☐ Nago

Free day at the hotel

Enjoy the beach or explore at leisure.

DAY 4 SUN 5 APR

☐ Yomitan

Day tour with private car

- Zakimi Castle Ruins
- Cape Maeda
- Coral Dyeing Experience

DAY 5 MON 6 APR

☐ Naha

Day tour with private car

- Morning Market Tour and Cooking Class
- Okinawa Prefectural Museum & Art Museum
- Tsuboya Yachimun Pottery Street

DAY 6 TUE 7 APR

☐ Naha

Transfer to Naha International Airport with private car



Post-Trip INCLUSIONS

PRICE OP1

599 / PERSON

Based on a group of 4 people

PRICE OP2

\$3199 / PERSON

Based on a group of 4 people

PRICE OP3

\$2999 / PERSON

Based on a group of 4 people

TICKETS AND ACTIVITIES

- Day 1:
 - OP 1 and Op 2: Hiroshima Castle, Hiroshima Peace Memorial Museum
- Day 2:
 - Op 2 and Op3: Shuri Castle
- Day 4:
 - Op 2 and Op3: Shuri Castle, Zakimi Castle Ruins, Cape Maeda, Coral Dyeing Experience
- Day 5:
 - Op 2 and Op3: Shuri Castle, Morning Market Tour and Cooking Class, Okinawa Prefectural Museum & Art Museum

ACCOMMODATION

- Included for all nights

NOT INCLUDED

- International flights
- Meals, transportation and activities not listed in the inclusions
- Personal expenses such as gifts and snacks
- Concierge service

TRANSPORTATION

- Private car on the mentioned days
- Flights on day 2:
 - Op. 2: Domestic flight from Hiroshima Airport to Naha Airport in economy class
 - Op. 3: Domestic flight from Itami Airport to Naha Airport in economy class
- IC card charged with 2,000 JPY for Op.1 and Op.2

MEALS

- Breakfast everyday Lunch Op2 and Op 3 : Day 5 as part of cooking class
- Dinner: None
-

ENGLISH SPEAKING GUIDE

- English-speaking guide every day except on day 2

Single Supplement:

Op 1: \$199

Op2: \$1099

Op3: \$999

Post-Trip

ACCOMMODATION INFORMATION

KYOTO TAKASEGAWA VILLA

KYOTO

<https://kyoto-takasegawabettei.com/en/>

ROOM INFORMATION

Twin Bed Room - Double occupancy (37,7 sqm)



KANEHIDE KISE BEACH PALACE

HIROSHIMA

<https://www.intergatehotels.jp/hiroshima>

/en/

ROOM INFORMATION

Superior-Twin-Room - Double occupancy (24 sqm)



LATITUDE
AND GRACE